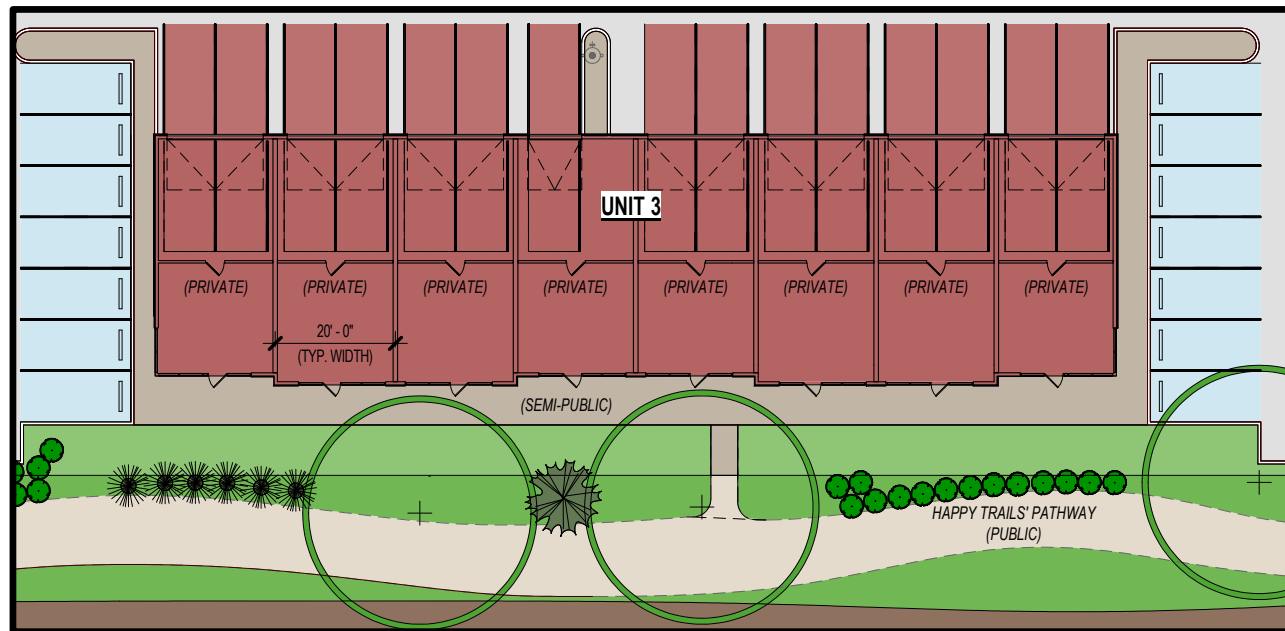


4 STOREY APARTMENT FOOTPRINT  
1/32" = 1'-0"



UNIT 3 LIVE/WORK DEVELOPMENT  
1/32" = 1'-0"

SITE PLAN  
1" = 60'-0"

PARKING LEGEND		PARKING COUNT	
	UNIT 1 PARKING STALLS	UNIT 1 STALLS PROVIDED	65 STALLS
	UNIT 2 PARKING STALLS	UNIT 2 STALLS PROVIDED	20 STALLS
	UNIT 3 PARKING STALLS	UNIT 3 PERMANENT STALLS PROVIDED	15 STALLS
	VISITOR PARKING STALLS	UNIT 3 INTERMITTENT STALLS PROVIDED	15 STALLS
		VISITOR STALLS PROVIDED	13 STALLS
		TOTAL PARKING REQUIRED:	128 STALLS
		TOTAL PARKING PROVIDED:	128 STALLS

SITE INFORMATION	
<b>MUNICIPAL ADDRESS:</b> 3rd STREET N.W. HIGH RIVER, ALBERTA	<b>LAND USE DESIGNATION:</b> DC BYLAW 4422/2014
<b>LEGAL ADDRESS:</b> UNITS: 1, 2 & 3 CONDO PLAN: 1411855	<b>LOT AREAS:</b> UNIT 1: 20,340 ft <sup>2</sup> (1,890 m <sup>2</sup> ) 0.47 ACRES - 62 UNITS UNIT 2: 10,785 ft <sup>2</sup> (1,002 m <sup>2</sup> ) 0.25 ACRES - 20 UNITS UNIT 3: 12,340 ft <sup>2</sup> (1,146 m <sup>2</sup> ) 0.28 ACRES - 8 UNITS

PARKING PROVISION	
2600 x 5600	123
4000 x 5600 (Barrier Free)	5
<b>GRAND TOTAL: 128</b>	